

DURABLE AND CAPABLE WINCHES

MECHANICAL COMPONENTS
WARRANTY: 3 Year

ELECTRICAL PARTS
WARRANTY: 12 Month

EW-11000S OFF-ROAD

- » **CORDED CONTROLLER INCLUDED**
- » **SYNTHETIC ROPE**



- » **Rated Line Pull:** 11,000 lbs. Single line
- » **Motor:** 5.5hp 12V series wound
- » **Weight:** 66 lbs.
- » **Finish:** Dark gray
- » **Overall Dimensions:** 21.3"(L) x 6.3"(W) X 8.6"(H)
- » **PART NO. 47-1413**

EWI-9500 OUTBACK

- » **WIRELESS CONTROLLER INCLUDED**
- » **SYNTHETIC ROPE**



- » **Rated Line Pull:** 9,500 lbs. Single line
- » **Motor:** 6.6hp 12V series wound
- » **Weight:** 101 lbs.
- » **Finish:** Dark gray
- » **Overall Dimensions:** 21.1"(L) x 6.3"(W) X 10.0"(H)
- » **PART NO. 47-1795**

EWI-12000 OUTBACK

- » **WIRELESS CONTROLLER INCLUDED**
- » **SYNTHETIC ROPE**



- » **Rated Line Pull:** 12,000 lbs. Single line
- » **Motor:** 6.6hp 12V series wound
- » **Weight:** 101 lbs.
- » **Finish:** Dark gray
- » **Overall Dimensions:** 21.3"(L) x 6.3"(W) X 10.0"(H)
- » **PART NO. 47-1612**

WESTIN®

DE BUMPER WINCH MOUNTING



MAX® WESTIN
WINCH MOUNTING SYSTEM

MAX® WINCH MOUNTING SYSTEM
SHOWN ON 2006 CHEVY SILVERADO
PART NO. 46-21175

MAX® WINCH TRAY

» BASE UNIT

- » HD brackets mount directly to vehicle frame
- » Winch tray tested to a minimum straight line pull of 16,500 lbs.
- » Fits most medium frame 8,000-12,000 lbs. winches (up to 10.25" tall)
- » Pre-drilled for quick mounting of hawse or roller fairlead
- » Optional MAX® Bull Bar/Light Bar
- » Optional MAX® Faceplate
- » Optional MAX® Tow Hooks (Part No. 46-3005 – 2 needed)



AVAILABLE ACCESSORIES:



MAX® TOW HOOK
PART NO. 46-3005



HAWSE FAIRLEAD
PART NO. 47-3410



4-WAY ROLLER FAIRLEAD
PART NO. 47-3400



LICENSE PLATE RE-LOCATOR
PART NO. 46-20055

FINISH: Black Powder Coat
MATERIAL: Steel
WARRANTY: 3 Year

OFF-ROAD READY! INSTALLERS PREFER WESTiN[®]

MAX[®] FACEPLATE

» **OPTIONAL**



- » Mounts directly to MAX Winch Tray
- » Application specific
- » Polished stainless steel
- » Tow hook openings
- » 14 gauge .075"

FINISH: Polished
MATERIAL: 304 Stainless Steel
WARRANTY: Lifetime

MAX[®] BULL BAR/LIGHT BAR

» **OPTIONAL**



- » Mounts directly to MAX Winch Tray
- » Made of 3" tube
- » Mount up to 3 off-road lights for most applications
- » Pre-drilled for wire management
- » No drilling required

FINISH: Stainless
MATERIAL: 304 Stainless Steel
WARRANTY: Lifetime

FINISH: Black Powder Coat
MATERIAL: Steel
WARRANTY: 3 Year

EWI-12000 OUTBACK

» **WIRELESS CONTROLLER INCLUDED**



- » **Rated Line Pull:** 12,000 lbs. Single line
- » **Motor:** 6.6hp 12V series wound
- » **Weight:** 101 lbs.
- » **Finish:** Dark gray
- » **Overall Dimensions:** 21.3"(L) x 6.3"(W) X 10.0"(L)

MECHANICAL COMPONENTS
WARRANTY: 3 Year

ELECTRICAL PARTS
WARRANTY: 12 Month

» **PART NO. 47-1612**

ATV WINCHES

MECHANICAL COMPONENTS
WARRANTY: 3 Year

ELECTRICAL PARTS
WARRANTY: 12 Month

ATW PRO-3500 WINCH

- » HANDLEBAR-MOUNTED SWITCH INCLUDED
- » STEEL ROPE



- » Rated Line Pull: 3,500 lbs. Single line
- » Motor: 1.1hp permanent magnet motor 12V DC
- » Weight: 28.6 lbs.
- » Finish: Black with yellow ends
- » Overall Dimensions: 4.9"(L) x 3.0"(W) x 3.0"(H)
- » **PART NO. 47-1235**

ATW PRO-4500 WINCH

- » CORDED HAND-HELD CONTROL INCLUDED
- » STEEL ROPE



- » Rated Line Pull: 4,500 lbs. Single line
- » Motor: 1.3hp permanent magnet motor 12V DC
- » Weight: 31 lbs.
- » Finish: Black with yellow ends
- » Overall Dimensions: 4.6"(L) x 4.7"(W) X 7.1"(H)
- » **PART NO. 47-1245**

ATW PRO-4500S WINCH

- » CORDED HAND-HELD CONTROL INCLUDED
- » SYNTHETIC ROPE



- » Rated Line Pull: 4,500 lbs. Single line
- » Motor: 1.3hp permanent magnet motor 12V DC
- » Weight: 23.6 lbs.
- » Finish: Black with yellow ends
- » Overall Dimensions: 4.6"(L) x 4.7"(W) X 7.1"(H)
- » **PART NO. 47-1246**



ATV-2000 WINCH

- » HANDLEBAR-MOUNTED SWITCH INCLUDED
- » STEEL ROPE



- » **Rated Line Pull:** 2,000 lbs. Single line
- » **Motor:** .85hp permanent magnet motor 12V DC
- » **Weight:** 11 lbs.
- » **Finish:** Black
- » **Overall Dimensions:** 11.6"(L) x 3.8"(W) X 4.1"(H)
- » **PART NO. 47-1220**

ATV-3000 WINCH

- » CORDED HAND-HELD CONTROL INCLUDED
- » STEEL ROPE



- » **Rated Line Pull:** 3,000 lbs. Single line
- » **Motor:** 1.1hp permanent magnet motor 12V DC
- » **Weight:** 29 lbs.
- » **Finish:** Black with yellow ends
- » **Overall Dimensions:** 12.3"(L) x 7.0"(W) X 4.2"(H)
- » **PART NO. 47-1230**

EXTREME ACTION ACCESSORIES

WINCH ACCESSORIES
WARRANTY: 3 Year

ROPES



SYNTHETIC
WINCH CABLE

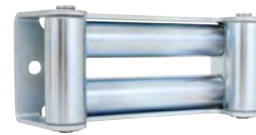
SHACKLES



D-SHACKLE

BOW SHACKLE

4-WAY ROLLER FAIRLEADS



4-WAY ROLLER FAIRLEAD
(8500 LBS AND UP)

4-WAY ROLLER FAIRLEAD
(ATV PRO SERIES)



STRAPS



TOW STRAP

SNATCH BLOCK



4" SNATCH BLOCK

HAWSE FAIRLEADS



POLISHED ALUMINUM
FAIRLEAD-L (AFL)

POLISHED ALUMINUM
FAIRLEAD-S (AFS)





CONTROL UNITS

INTEGRATED
CONTROL UNIT



RECOVERY KITS



» ATV RECOVERY KIT ALSO AVAILABLE

WINCH COVER



CLEVIS HOOKS



1/4" CLEVIS HOOK
 3/8" CLEVIS HOOK
 5/16" CLEVIS HOOK

WINCH MOUNTING



MULTI RECEIVER
WINCH MOUNT

COMPRESSORS

PORTABLE
COMPRESSOR

