



TOOL BOXES

ALWAYS THERE WHEN YOU NEED IT



MADE IN THE USA



BEDSAFE BOX



- » Made of .100 thick aluminum diamond tread case, reinforced
- » 3/16" thick bottom reinforcement channels
- » 500 lbs top and side load capacity (evenly distributed)
- » 350 lbs drawer capacity (evenly distributed)
- » Over drawer rain gutter
- » One Touch safety latch
- » Fits the beds of pickups, service bodies and vans
- » Many sizes available
- » Drilling required



FINISH: Polished
MATERIAL: Aluminum
WARRANTY: Limited Lifetime

Westin

BRUTE



TOOL BOXES



CROSSOVER BOXES

» FULL LID AND LOW PROFILE LID

- » Available in several dimensions: Standard, deep, wide, and deep & wide
- » Made of .063 thick aluminum diamond tread
- » .080 thick aluminum reinforcement throughout the tool box
- » Includes a tool and level holder
- » HD struts that re-force the lid
- » Beveled lid design
- » Full rubber weather seal
- » Sturdy hinge points
- » HD aluminum adjustable tray
- » Under body support for added strength
- » Full metal shield to protect rotary latches & linkage rods
- » "J" hook for easy install

FINISH: Polished

MATERIAL: Aluminum

WARRANTY: Limited Lifetime

FINISH: Black Powder Coat

MATERIAL: Aluminum

WARRANTY: Limited Lifetime



Under body support
for added strength



TOOL BOXES

JOBSITE BOX



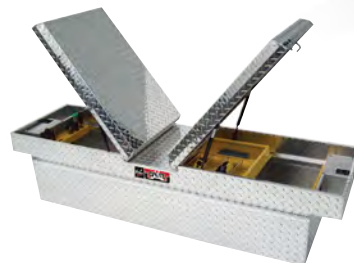
- » Reinforced lid
- » Beveled lid design – Reinforced
- » 48" level holder
- » Full rubber seal
- » Two chrome handles
- » Also available in black powder coated aluminum

CONDUIT CARRIERS



- » Made of .063 thick aluminum construction
- » Installation kit included
- » Attaches to most ladder racks
- » Lockable rotation hasp latch
- » Spring loaded door
- » Available in polished aluminum

GULL WING BOXES



- » Available in several sizes:
Standard, Deep, Wide and Deep & Wide
- » Beveled lid design
- » Full rubber weather seal
- » Two gas props on each lid
- » Also available in black powder coated aluminum

LOW PROFILE LOSIDER BOXES



- » Low profile above bed rail
- » Increased rear view vision
- » Beveled lid design
- » Full rubber weather seal
- » "J" hook, easy install
- » Also available in black powder coated aluminum

CHEST BOXES



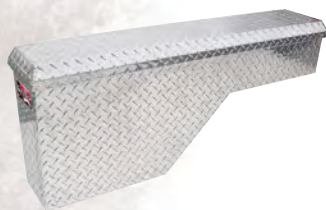
- » Offset on rear allows 90° lid opening
- » Beveled reinforced lid
- » Full rubber weather seal
- » Sit below side rails, perfect for 5th wheel trailers
- » Full metal guards on gas props
- » Also available in black powder coated aluminum

LOSIDER SIDE RAIL BOXES



- » Made of .063 thick aluminum construction
- » Beveled lid design
- » Full rubber weather seal
- » "J" hook, easy install
- » Full metal guards on gas props
- » Also available in black powder coated aluminum

PORK CHOP BOXES



- » Over the wheel well design
- » Beveled reinforced lid
- » Built-in organizer
- » Full metal guards on gas props
- » Also available in black powder coated aluminum

GOOSE NECK/FIFTH WHEEL



- » Mounts at tailgate*
- » 2 recessed swing door compartments
- » 100 lb. capacity drawer slides
- » Easy access to all compartments
- » Stainless steel folding / locking T-handles
- » Also available in black powder coated aluminum

*Clearance verification required

MAXIMUS CHEST BOXES



- » Reinforced lid
- » Push button rotary latch
- » Gas prop & hardware shields
- » Full rubber weather seal
- » Also available in black powder coated aluminum

HIGH CAPACITY STAKE BED

CONTRACTOR BOXES



- » Designed for flat / stake beds
- » Extra deep and tall
- » Reinforced top shelf
- » Heavy duty gas shocks on flip up door
- » Secure stainless folding locking T-handles
- » Option of bottom drawers or fold down doors
- » Also available in black powder coated aluminum

CONTRACTOR BOXES



- » Designed for flat / stake beds
- » Configuration varies by length
- » Extra deep and tall
- » Bottom drawers with organizers
- » Reinforced top shelf to carry the load
- » Secure stainless folding locking T-handles
- » Also available in black powder coated aluminum

CONTRACTOR UNDER

BODY BOXES



- » Top drawer with stainless locking/folding T-handle
- » Reinforced bottom door with support cables
- » The bottom has a compartment for heavier cargo
- » Full rubber weather seal
- » Large rain gutter design to channel water away from valuable cargo

HD STEP BOXES



- » .125 thick smooth aluminum body
- » .100 thick aluminum diamond tread door
- » .080 thick perforated aluminum steps
- » Angle reinforced back corners assist in mounting
- » Welded aluminum construction
- » Available in polished aluminum

HD UNDER BODY DROP DOWN

DOOR BOXES



- » .100 thick diamond tread aluminum construction
- » .125 thick smooth aluminum bottom corner reinforcement
- » Welded gussets in each corner of door frame
- » Stainless steel support cables
- » Available in polished aluminum

HD UNDER BODY SWING

DOOR BOXES



- » .100 thick diamond tread aluminum construction
- » .125 thick smooth aluminum bottom corner reinforcement
- » Welded gussets in each corner of door frame
- » Stainless steel hinge
- » Available in polished aluminum

HD TOPSIDER BOXES



- » .100 thick diamond tread aluminum construction
- » Welded gussets in each corner of door frame
- » Overhead rain gutter
- » Compression handle
- » Roller cam latch
- » Available in polished aluminum

HIGH CAPACITY HD TOPSIDER



- » .100 thick diamond tread aluminum construction
- » Welded gussets in each corner of door frame
- » Overhead rain gutter
- » Compression handle
- » Roller cam latch
- » Available in polished aluminum

HD UNDER BODY BOXES



- » .100 thick diamond tread aluminum construction
- » Genuine trim-lock bulb seal
- » Drawers with adjustable dividers
- » Compression handle
- » Roller cam latch
- » Available in polished aluminum